



MB-500^{Q&As}

Microsoft Dynamics 365 Finance and Operations Apps Developer

Pass Microsoft MB-500 Exam with 100% Guarantee

Free Download Real Questions & Answers **PDF** and **VCE** file from:

<https://www.lead4pass.com/mb-500.html>

100% Passing Guarantee
100% Money Back Assurance

Following Questions and Answers are all new published by Microsoft
Official Exam Center

- ⚙ **Instant Download** After Purchase
- ⚙ **100% Money Back** Guarantee
- ⚙ **365 Days** Free Update
- ⚙ **800,000+** Satisfied Customers





QUESTION 1

A company has an extension that makes changes to a base form.

You need to identify all extension changes made to the base form.

What are two possible ways to achieve the goal? Each correct answer presents a complete solution.

NOTE: Each correct selection is worth one point.

- A. In the search bar on the form extension element, enter the text c:.
- B. In the search bar on the base form, enter the text e:.
- C. Right-click the base form and select view references.
- D. In the search bar on the form extension element, enter the text e:.
- E. In the search bar on the base form, enter the text c:.

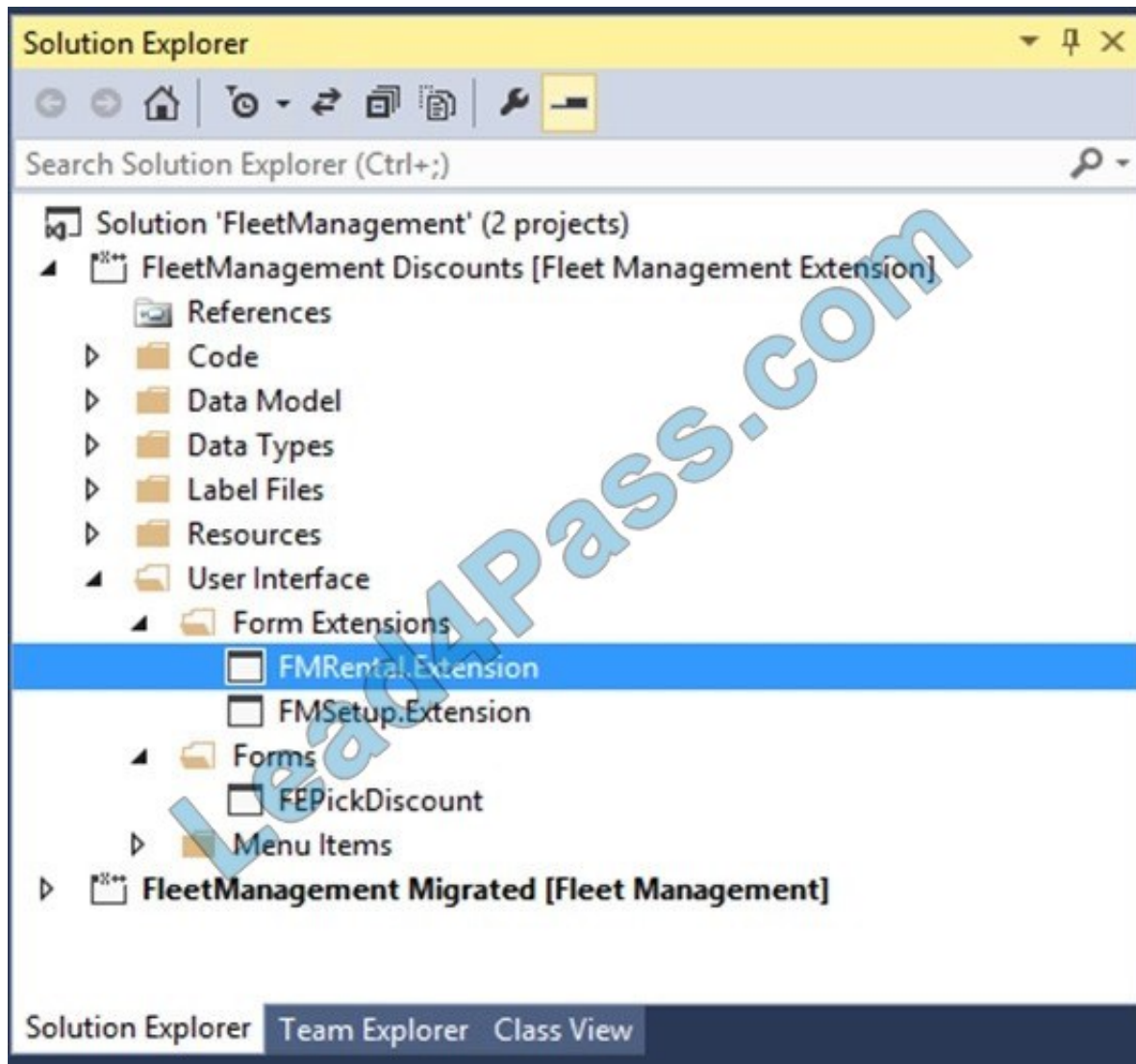
Correct Answer: CD

C: Customization and Extension

View references	Create a diagram that shows the other elements that reference the selected element.
-----------------	---

D: Example: Navigate to FM.Rental.Extension in the Tree Designer

1. In the Visual Studio, in Solution Explorer, in the FleetManagement Discounts project, expand User Interface > Form Extensions.



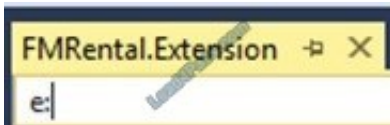
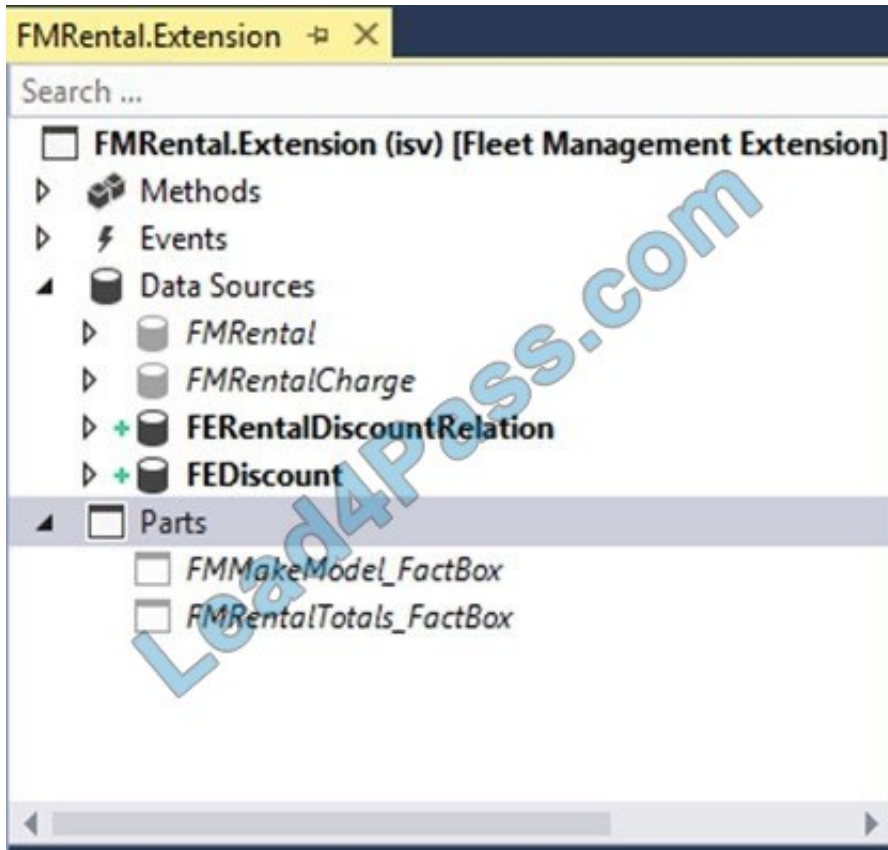
The FMRental.Extension element is an extension element that extends the functionality of the FMRental form by adding two new data sources and a new tab control.

2.

In Solution Explorer, double-click FMRental.Extension to open the designer.

3.

In the designer's search box, type '\\e:\\' as shown in the image below. This filters the current designer to only show nodes that belong to the current extension.



Reference: <https://docs.microsoft.com/en-us/dynamics365/fin-ops-core/dev-itpro/extensibility/customize-model-elements-extensions>

QUESTION 2

You are a Dynamics 365 Finance and Operations developer.

You need to create an extension class. Which action should you perform?

- A. Mark the class as final.
- B. Add the suffix .extension to the file name.
- C. Mark the class as protected.
- D. Mark the class as private.

Correct Answer: A

Reference: <https://docs.microsoft.com/en-us/dynamics365/fin-ops-core/dev-itpro/extensibility/method-wrapping-coc>

QUESTION 3

You need to investigate the Vendor exclusion list issue. What should you do?

- A. Navigate to the General tab, select Record Info, and then select Show all fields.
- B. Navigate to the Options tab, select Record Info, and then select Show all fields.
- C. Navigate to the Options tab and select Database log.
- D. Navigate to the Page options tab, select Record Info, and then select Show all fields.

Correct Answer: C

Scenario: A sales manager suspects a data-related issue in the vendor exclusion list. User1 must identify the user who created the referenced exclusion records.

Database logging is a feature in D365FO which helps us to track inserts, updates, and deletes on the intended tables provided if we are fine with the overhead of extra logging for every database operation on enabled tables.

Reference:

<https://community.dynamics.com/365/financeandoperations/b/daxology/posts/database-logging-setup-in-d365fo>

QUESTION 4

You are developing a customization for Dynamics 365 Unified Operations.

The customization must extend objects from the Application Foundation package.

You need to create and configure a new model for the customization.

Which two actions should you perform? Each correct answer presents part of the solution.

NOTE: Each correct selection is worth one point.

- A. Create an extension class that references the Application Foundation.
- B. Assign the model to the USR layer.
- C. Reference the Application Foundation package when creating the extension model.
- D. Create a new model that builds into two its own separate assembly.
- E. Create a new model that is part of an existing package.

Correct Answer: A

A: You must create a class.

D: Extension lets you extend existing artifacts in a new model.

A model that contains only extension customizations can be compiled into its own assembly and be deployed in its own package.



Reference: <https://docs.microsoft.com/en-us/dynamics365/fin-ops-core/dev-itpro/extensibility/class-extensions>

<https://docs.microsoft.com/en-us/dynamics365/fin-ops-core/dev-itpro/dev-tools/model-split>

QUESTION 5

You need to modify the environment to meet User1\\s requirements. What should you do?

- A. Create an extension of CashDisc in a new project and add the field to the extended table,
- B. Create a new table named CashDiscExtension in the project.
- C. Use Open Designer to add the field to the table.
- D. Create an overlayer of CashDisc in a new project and add the field.

Correct Answer: A

Scenario: A sales manager suspects a data-related issue in the vendor exclusion list. User1 must identify the user who created the referenced exclusion records.

QUESTION 6

DRAG DROP

You need to set up a recurring integration to enable file exchanges between Dynamics 365 Finance and a third-party system.

In which order should you perform the actions? To answer, move all actions from the list of actions to the answer area and arrange them in the correct order.

Select and Place:

Actions	Answer Area
Set up the processing recurrence.	
Link a new application ID to the data recurring data job.	
Specify whether you are using a file or data package.	
Set up a data project.	
Create a recurring data job.	

Correct Answer:



Actions	Answer Area
	Set up a data project.
	Create a recurring data job.
	Specify whether you are using a file or data package.
	Set up the processing recurrence.
	Link a new application ID to the data recurring data job.

Step 1: Set up a data project

Step 2: Create a recurring data job

Create a recurring data job

On the Data project page, select Create recurring data job (Step 2)

Enter a valid name and a description for the recurring data job.

On the Set up authorization policy tab, enter the application ID that was generated for your application, and mark it as enabled.

Expand Advanced options tab, and specify either File or Data package (Step 3)

Select Set processing recurrence, and then, in the Define recurrence dialog box, set up a valid recurrence for your data job (Step 4)

Step 3: Specify whether you are using a file or data package.

Step 4: Set up the processing recurrence

Step 5: Link a new application ID to the data recurring data job

You can use integration REST endpoints to integrate with the client, submit documents (import), or poll available documents for download (export). These endpoints support OAuth.

Reference:

<https://docs.microsoft.com/en-us/dynamics365/fin-ops-core/dev-itpro/data-entities/recurring-integrations>

QUESTION 7

DRAG DROP

You are a Dynamics 365 Finance developer.

You need to configure integration between Dynamics 365 Finance and other tools.



Which integration types should you use? To answer, drag the appropriate integration types to the correct requirement. Each integration type may be used once, more than once, or not at all. You may need to drag the split bar between panes

or scroll to view content.

NOTE: Each correct selection is worth one point.

Select and Place:

Answer Area

Integration types

synchronous

asynchronous

Requirement

Request information about product availability from a web page to calculate the extended price.

Periodically update a reporting database.

Edit data in Microsoft Excel by using the Excel Data Connector add-in.

Import a credit card data file once each day.

Integration type

Correct Answer:

Answer Area

Integration types

synchronous

asynchronous

Requirement

Request information about product availability from a web page to calculate the extended price.

Periodically update a reporting database.

Edit data in Microsoft Excel by using the Excel Data Connector add-in.

Import a credit card data file once each day.

Integration type

synchronous

asynchronous

synchronous

asynchronous

Box 1: synchronous

A synchronous pattern is a blocking request and response pattern, where the caller is blocked until the callee has finished running and gives a response.

Box 2: Asynchronous

An asynchronous pattern is a non-blocking pattern, where the caller submits the request and then continues without waiting for a response.

Box 3: synchronous

Box 4: Asynchronous

A typical Batch job.



Reference:

<https://docs.microsoft.com/en-us/dynamics365/fin-ops-core/dev-itpro/data-entities/integration-overview>

QUESTION 8

You are a Dynamics 365 Finance developer. You create a key performance indicator (KPI) in a development environment.

You need to display the KPI.

What should you do?

- A. Create a new workspace and add the KPI to the workspace.
- B. Create a tile and add the KPI to the tile.
- C. Add the KPI to an existing form.

Correct Answer: A

KPIs and aggregate data that are shown on the dashboard, or a workspace, can be secured by using menu items.

Reference: <https://docs.microsoft.com/en-us/dynamics365/fin-ops-core/dev-itpro/analytics/model-aggregate-data>

QUESTION 9

You have a cloud-based Dynamics 365 Finance production environment.

You need to access the data to create Microsoft Power BI reports for the business.

What should you use?

- A. aggregate measurements
- B. DirectQuery
- C. Analysis Cubes
- D. Entity store

Correct Answer: D

When you have completed modeling the aggregate measurement, you can deploy the aggregate measurement and continue with building KPIs and visualizations. You have 2 deployment choices:

Stage in Entity Store. This option leverages Entity store, the operational data store that enables near real-time PowerBI reporting.

In-memory real-time

Reference:



<https://docs.microsoft.com/en-us/dynamics365/fin-ops-core/dev-itpro/analytics/model-aggregate-data>

QUESTION 10

HOTSPOT

You are a Dynamics 365 Finance developer.

You need to create a security rule that meets the following requirements:

Provide the same permissions as HcmWorkerActionHireRead

Assign the Update level access and the HcmHumanResourceManager Role

Which settings should you use? To answer, select the appropriate option in the answer area.

NOTE: Each correct selection is worth one point.

Hot Area:

Answer Area

Setting	Property										
Operation	<table><tr><td></td><td>▼</td></tr><tr><td colspan="2">Insert</td></tr><tr><td colspan="2">Update</td></tr><tr><td colspan="2">Delete</td></tr><tr><td colspan="2">InsertUpdateDelete</td></tr></table>		▼	Insert		Update		Delete		InsertUpdateDelete	
	▼										
Insert											
Update											
Delete											
InsertUpdateDelete											
Set HcmHymanResourceManager	<table><tr><td></td><td>▼</td></tr><tr><td colspan="2">Primary Table</td></tr><tr><td colspan="2">Query</td></tr><tr><td colspan="2">Role Name</td></tr><tr><td colspan="2">Operation</td></tr></table>		▼	Primary Table		Query		Role Name		Operation	
	▼										
Primary Table											
Query											
Role Name											
Operation											

Correct Answer:



Answer Area

Setting	Property
Operation	<div><div></div><div>▼</div></div> <div>Insert</div> <div>Update</div> <div>Delete</div> <div>InsertUpdateDelete</div>
Set HcmHymanResourceManager	<div><div></div><div>▼</div></div> <div>Primary Table</div> <div>Query</div> <div>Role Name</div> <div>Operation</div>

QUESTION 11

HOTSPOT

A user reports that a form takes a long time to load. You suspect that the issue relates to a display method.

You need to resolve the issue.

Which actions should you perform? To answer, select the appropriate options in the answer area.

NOTE: Each correct selection is worth one point.

Hot Area:



Answer Area

Action

Improves performance

Add the following attribute to the display method:
`[SysClientCachedataMethodAttribute(true)]`

<input type="checkbox"/>	▼
true	
false	

Set the value of the Enabled property to **No** for any display fields that are not needed.

<input type="checkbox"/>	▼
true	
false	

Set the value of the Visible property to **No** for any display fields that are not needed.

<input type="checkbox"/>	▼
true	
false	

Set the value of the Skip property to **Yes** for any display fields that are not needed.

<input type="checkbox"/>	▼
true	
false	

Correct Answer:

Answer Area

Action

Improves performance

Add the following attribute to the display method:
`[SysClientCachedataMethodAttribute(true)]`

<input type="checkbox"/>	▼
true	
false	

Set the value of the Enabled property to **No** for any display fields that are not needed.

<input type="checkbox"/>	▼
true	
false	

Set the value of the Visible property to **No** for any display fields that are not needed.

<input type="checkbox"/>	▼
true	
false	

Set the value of the Skip property to **Yes** for any display fields that are not needed.

<input type="checkbox"/>	▼
true	
false	

Reference: <https://docs.microsoft.com/en-us/dynamicsax-2012/developer/using-the-display-method-modifier>



QUESTION 12

DRAG DROP

You create a Visual Studio project named ProductUpdates.

You must update data in a table named ProductTable. You must be able to run the code from Visual Studio.

You need to create an X++ class.

Which five actions should you perform in sequence? To answer, move the appropriate actions from the list of actions to the answer area and arrange them in the correct order.

Select and Place:

Actions	Answer Area
Add the ExtensionOf attribute to the class.	
Set the class as the startup object.	
Write database manipulation code in the class.	
Build and run the class.	
Create a runnable class and add it to the ProductUpdates project.	
Create a class extension of the ProductTable and add it to the ProductUpdates project.	
Open the new class and add a main method to the class.	

Correct Answer:



Answer Area

Actions

Add the ExtensionOf attribute to the class.

Open the new class and add a main method to the class.

Create a runnable class and add it to the ProductUpdates project.

Create a class extension of the ProductTable and add it to the ProductUpdates project.

Write database manipulation code in the class.

Build and run the class.

Set the class as the startup object.

Explanation:

Step 1: Create a runnable class and add it to the ProductUpdates project.

Step 2: Create a class extension of the ProductTable and add it to the ProductUpdates project.

Step 3: Write database manipulation code in the class

Step 4: Build and run the class.

Step 5: Set the class as the startup project.

Reference:

<https://community.dynamics.com/365/financeandoperations/b/daxology/posts/runnable-class>

QUESTION 13

HOTSPOT

You create the following cloud-based Dynamics 365 Finance environments:



Name	Comments
Development	Visual Studio workspace is configured and connected to an Azure DevOps branch.
Build	A Build pipeline is configured.
Standard Acceptance Test	This is a sandbox environment for testing customizations.

A developer creates code extensions in the Development environment. The developer checks the code changes into an Azure DevOps branch.

You need to deploy the code changes to the Standard Acceptance Test environment.

What should you do? To answer, select the appropriate options in the answer area.

NOTE: Each correct selection is worth one point.

Hot Area:

Answer Area

How should you prepare the package?

☐ Export the Visual Studio project as an .axpp file.

☐ Build the code in a DevOps pipeline.

☐ Export the Visual Studio solution as a file.

In which section of the Lifecycle Services (LCS) should you store the package?

☐ Work items

☐ Solution management

☐ Asset library

How should you install the customization?

☐ Select Maintain and then Apply updates.

☐ Select Maintain and then Upgrade.

☐ Select LCS project and then Business process modeler.

☐ Select LCS project and then Code upgrade.

Correct Answer:



Answer Area

How should you prepare the package?

- Export the Visual Studio project as an .axpp file.
- Build the code in a DevOps pipeline.
- Export the Visual Studio solution as a file.

In which section of the Lifecycle Services (LCS) should you store the package?

- Work items
- Solution management
- Asset library

How should you install the customization?

- Select Maintain and then Apply updates.
- Select Maintain and then Upgrade.
- Select LCS project and then Business process modeler.
- Select LCS project and then Code upgrade.



To Read the [Whole Q&As](#), please purchase the [Complete Version](#) from [Our website](#).

Try our product !

100% Guaranteed Success

100% Money Back Guarantee

365 Days Free Update

Instant Download After Purchase

24x7 Customer Support

Average 99.9% Success Rate

More than 800,000 Satisfied Customers Worldwide

Multi-Platform capabilities - Windows, Mac, Android, iPhone, iPod, iPad, Kindle

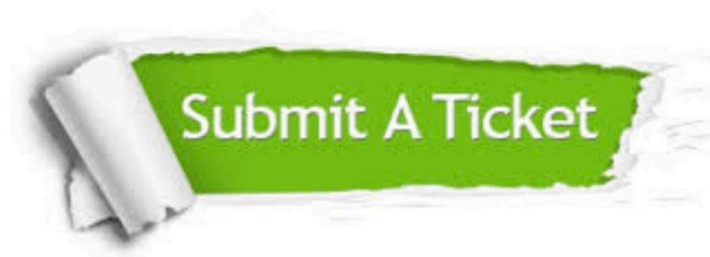
We provide exam PDF and VCE of Cisco, Microsoft, IBM, CompTIA, Oracle and other IT Certifications.
You can view Vendor list of All Certification Exams offered:

<https://www.lead4pass.com/allproducts>

Need Help

Please provide as much detail as possible so we can best assist you.

To update a previously submitted ticket:



 One Year Free Update Free update is available within One Year after your purchase. After One Year, you will get 50% discounts for updating. And we are proud to boast a 24/7 efficient Customer Support system via Email.	 Money Back Guarantee To ensure that you are spending on quality products, we provide 100% money back guarantee for 30 days from the date of purchase.	 Security & Privacy We respect customer privacy. We use McAfee's security service to provide you with utmost security for your personal information & peace of mind.
---	---	--

Any charges made through this site will appear as Global Simulators Limited.

All trademarks are the property of their respective owners.

Copyright © lead4pass, All Rights Reserved.