

# MD-100<sup>Q&As</sup>

Windows Client

## Pass Microsoft MD-100 Exam with 100% Guarantee

Free Download Real Questions & Answers **PDF** and **VCE** file from:

<https://www.leads4pass.com/md-100.html>

100% Passing Guarantee  
100% Money Back Assurance

Following Questions and Answers are all new published by Microsoft  
Official Exam Center

- ⚙ **Instant Download** After Purchase
- ⚙ **100% Money Back** Guarantee
- ⚙ **365 Days** Free Update
- ⚙ **800,000+** Satisfied Customers



**QUESTION 1**

Your network contains an Active Directory domain. The domain contains 1,000 computers that run Windows 10.

You configure Microsoft Edge settings by using domain and local Group Policy Objects (GPOs).

You need to generate a report that contains all the Microsoft Edge policy settings applied to a computer.

What should you do?

- A. From PowerShell, run the Gec-GPO cmdlet.
- B. From PowerShell, run the Gec-GPOReport cmdlet.
- C. From Microsoft Edge, open edge://policy.
- D. From the Start menu, select Group Policy Object Editor

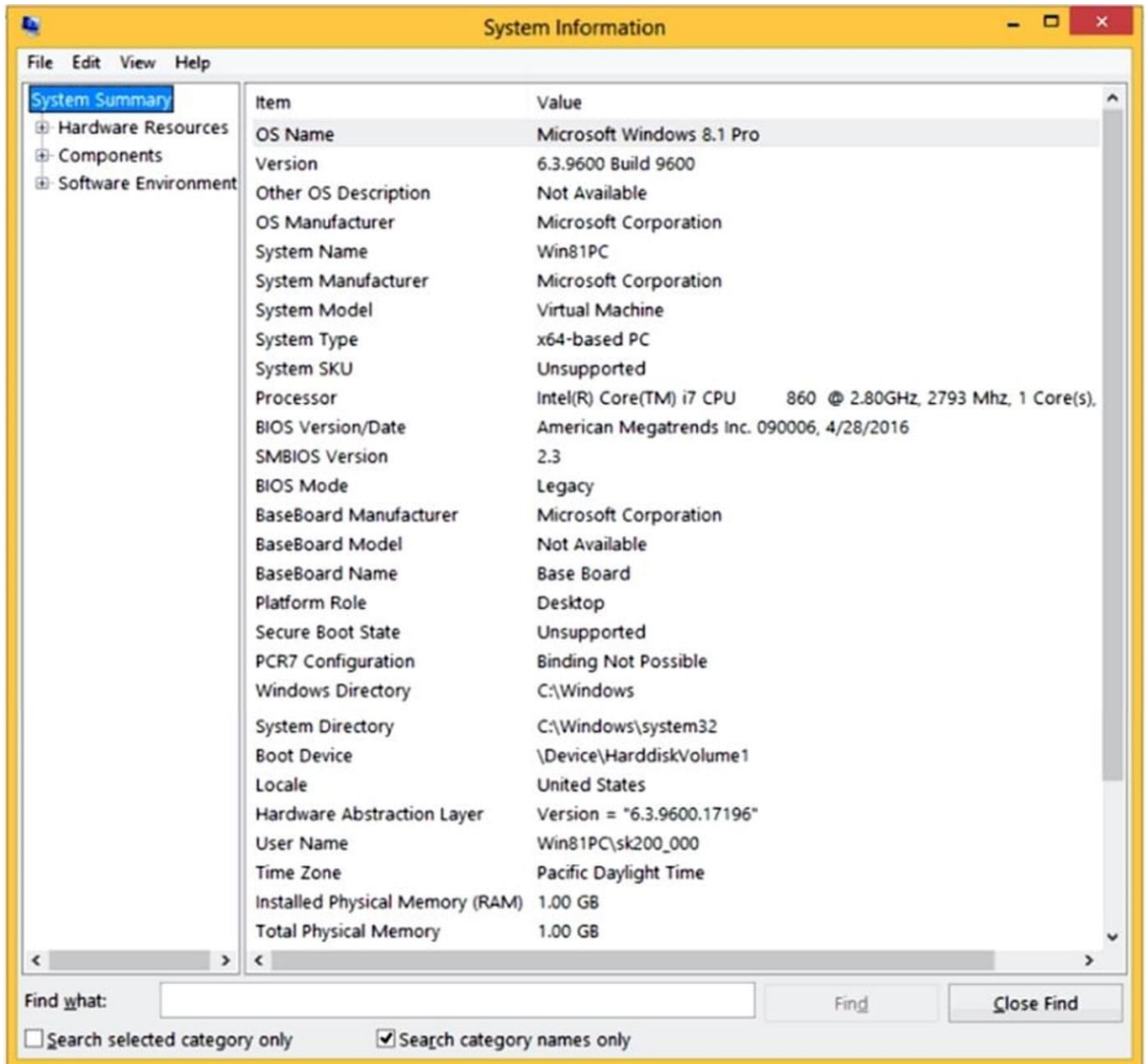
Correct Answer: C

The Get-GPOReport cmdlet would generate a report for all domain group policy objects. However, this would not display the settings that are applied by local group policy objects. To display the settings applied by both domain and local GPOs, you would have to open Microsoft Edge and enter edge://policy in the address bar.

---

**QUESTION 2****HOTSPOT**

You open System Information on a computer that runs Windows 8.1 as shown in the following exhibit.



Use the drop-down menus to select the answer choice that completes each statement based on the information presented in the graphic. NOTE: Each correct selection is worth one point.

Hot Area:

Before you can perform an in-place upgrade to Windows 10, you must first [answer choice].

- add an additional processor
- change the system name
- install a Windows Hello-compatible camera
- install additional physical memory
- replace BIOS with UEFI

The computer supports in-place upgrades to [answer choice].

- Windows 10 Enterprise only
- Windows 10 Pro only
- Windows 10 Pro and Windows 10 Enterprise

Correct Answer:

Before you can perform an in-place upgrade to Windows 10, you must first [answer choice].

add an additional processor
change the system name
install a Windows Hello-compatible camera
install additional physical memory
replace BIOS with UEFI

The computer supports in-place upgrades to [answer choice].

Windows 10 Enterprise only
Windows 10 Pro only
Windows 10 Pro and Windows 10 Enterprise

## QUESTION 3

You have a computer named Client1 that runs Windows 11. You perform the following actions on Client1:

1.

Enable Hyper-V.

2.

Create a virtual machine that runs Windows 11 Pro.

You need to connect to VM1 by using enhanced session mode. What should you do first?

- A. Enable Remote Assistance on Client1.
- B. Enable Remote Assistance on VM1.
- C. Enable Remote Desktop on VM1.
- D. Enable Remote Desktop on Client1.

Correct Answer: B

## QUESTION 4

DRAG DROP

You have a computer named Client1 that runs Windows 11 Home.

You need to ensure that you can create virtual machines on Client1.

Which four actions should you perform in sequence? To answer, move the appropriate actions from the list of actions to the answer area and arrange them in the correct order.

Select and Place:

## Actions

Restart the operating system

Enter a Windows 11 Pro product key

Enter a Windows 11 Enterprise product key

From Programs and Features, enable the Hyper-V Windows feature

From the Activation settings in the Settings app, select **Change product key**

## Answer Area

Correct Answer:

## Actions

Enter a Windows 11 Enterprise product key

## Answer Area

From the Activation settings in the Settings app, select **Change product key**

Enter a Windows 11 Pro product key

From Programs and Features, enable the Hyper-V Windows feature

Restart the operating system

## QUESTION 5

You have a computer named Computer1 that runs Windows 10. Computer1 is joined to an Active Directory domain named adatum.com. The domain contains two groups named Group1 and Group2. Computer1 contains a folder named C:\Folder1 that has the file permissions shown in the following table.

Group	Permission
Administrators	Full control
Group1	Read

You need to share C:\Folder1. The solution must ensure that the members of Group2 can access all the files in the

share. What should you do?

- A. From File Explorer, use Network File and Folder Sharing. Assign the Read permission to Group2.
- B. From File Explorer, use Advanced Sharing. Assign the Read share permission to Group2.
- C. From Control Panel, use Advanced sharing settings. Configure file and printer sharing for the network profile of the domain.
- D. At a command prompt, run the net share Share=C:\Folder /granc:adacum\group2, read command.

Correct Answer: D

Reference: <https://techgenix.com/net-share-command-30/>

---

## QUESTION 6

### HOTSPOT

You have a computer named Computer1 that runs Windows 10.

Computer has the users shown in the following table.

Name	Member of
User1	Administrators
User2	Replicator
User3	Guests

User1 signs in to Computer1, creates the following files, and then signs out:

File1.docx in C:\Users\User1\Desktop

File2.docx in C:\Users\Public\Public Desktop

File3.docx in C:\Users\Default\Desktop

User3 then signs in to Computer1 and creates a file named File4.docx in C:\Users\User3\Desktop.

User2 has never signed in to Computer1.

How many DOCX files will appear on the desktop of each user the next time each user signs in? To answer, select the appropriate options in the answer area.

NOTE: Each correct selection is worth one point.

Hot Area:

Number of documents that will appear for User1:

0
1
2
3
4

Number of documents that will appear for User2:

0
1
2
3
4

Number of documents that will appear for User3:

0
1
2
3
4

Correct Answer:



Number of documents that will appear for User1:

0
1
2
3
4

Number of documents that will appear for User2:

0
1
2
3
4

Number of documents that will appear for User3:

0
1
2
3
4

Box 1: 3

File1, File2 and File3.

C:\Users\Public\Desktop is the CommonDesktopDirectory special folder.

The "public desktop" folder is normally a hidden folder.

Box 2: 1

Only File3.

Box 3: 1

User3 is a guest so only the public desktop folder and File3 in that folder is displayed.

Reference: <https://superuser.com/questions/984866/how-to-make-a-desktop-shortcut-available-for-all-users-in-windows-10>

---

## QUESTION 7

A user has a computer that runs Windows 10.

When the user connects the computer to the corporate network, the user cannot access the internal corporate servers. The user can access servers on the Internet.

You run the ipconfig command and receive the following output.

```
Connection-specific DNS Suffix  . : 
Description . . . . . : Ethernet 1
Physical Address . . . . . : 00-50-B6-7B-E4-81
DHCP Enabled . . . . . : Yes
Autoconfiguration Enabled . . . . : Yes
Link-local IPv6 Address . . . . . : fe80::5d56:3419:e83b:3c46%17 (Preferred)
IPv4 Address . . . . . : 192.168.0.121 (Preferred)
Subnet Mask . . . . . : 255.255.255.0
Lease Obtained . . . . . : Wednesday, October 31, 2018 8:07:14 AM
Lease Expires . . . . . : Wednesday, October 31, 2018 8:07:14 PM
Default Gateway . . . . . : 192.168.0.1
DHCP Server . . . . . : 192.168.0.2
DHCPv6 IAID . . . . . : 536891574
DHCPv6 Client DUID . . . . . : 00-01-00-01-22-AC-5F-64-00-50-B6-7B-E4-81
DNS Servers . . . . . : 131.107.10.60
                       192.168.0.3
NetBIOS over Tcpip . . . . . : Enabled
```

You send a ping request and successfully ping the default gateway, the DNS servers, and the DHCP server. Which configuration on the computer causes the issue?

- A. the DNS servers
- B. the IPv4 address
- C. the subnet mask
- D. the default gateway address

Correct Answer: A

---

## QUESTION 8

You have 200 computers that run Windows 10 and are joined to an Active Directory domain.

You need to enable Windows Remote Management (WinRM) on all the computers by using Group Policy.

Which three actions should you perform? Each correct answer presents part of the solution.

NOTE: Each correct selection is worth one point.

- A. Set the Startup Type of the Windows Remote Management (WS-Management) service to Automatic.
- B. Enable the Windows Firewall: Allow inbound remote administration exception setting.
- C. Enable the Allow remote server management through WinRM setting.
- D. Enable the Windows Firewall: Allow inbound Remote Desktop exceptions setting.
- E. Enable the Allow Remote Shell access setting.
- F. Set the Startup Type of the Remote Registry service to Automatic.

Correct Answer: ABC

References: <https://support.auvik.com/hc/en-us/articles/204424994-How-to-enable-WinRM-with-domain-controller-Group-Policy-for-WMI-monitoring>

---

## QUESTION 9

You have a Microsoft Azure Active Directory (Azure AD) tenant.

Some users signs in to that computer by using Windows hello for Business.

A user User1 purchases a new computer and joins the computer to Azure AD.

User1 attempts to configure the sign-in options and receives the error message shown in the exhibit. (Click the Exhibit tab.)

## Sign-in options

### Manage how you sign in to your device

Select a sign-in option to add, change, or remove it.



Windows Hello Face

This option is currently unavailable—click to learn more



Windows Hello Fingerprint

This option is currently unavailable—click to learn more



Windows Hello PIN

Sign in with a PIN (Recommended)



Security Key

Sign in with a physical security key



Password

Sign in with your account's password



Picture Password

Swipe and tap your favorite photo to unlock your device

You open device Manager and confirmed that all the hardware works correctly.

You need to ensure that user1 can use Windows Hello for Business facial recognition to sign in to the computer.

What should you do first?

- A. Purchase an infrared (IR) camera.
- B. Install a virtual TPM driver.
- C. Enable UEFI Secure Boot.
- D. Upgrade the computer to windows 10 Enterprise.

Correct Answer: A

Windows Hello facial recognition requires an infrared (IR) camera. If your device does not have an infrared camera (or any other biometric device such as a fingerprint scanner), you will see the message shown in the exhibit. The question states that Device Manager shows all hardware is working properly. Therefore, it is not the case that the computer has an IR camera but it isn't working properly. The problem must be that the computer does not have an IR camera.

Incorrect Answers:

B: Windows 10 Enterprise is not required for Windows Hello. Windows Hello also works on Windows 10 Pro.

C: UEFI Secure Boot is not required for Windows Hello.

D: A virtual TPM driver is not required for Windows Hello.

Reference: <https://docs.microsoft.com/en-us/windows/security/identity-protection/hello-for-business/hello-planning-guide>

---

## QUESTION 10

Note: This question is part of a series of questions that present the same scenario. Each question in the series contains a unique solution that might meet the stated goals. Some question sets might have more than one correct solution, while

others might not have a correct solution.

After you answer a question in this section, you will NOT be able to return to it. As a result, these questions will not appear in the review screen.

You have a computer named Computer1 that runs Windows 10.

You test Windows updates on Computer1 before you make the updates available to other users at your company.

You install a quality update that conflicts with a customer device driver.

You need to remove the update from Computer1.

Solution: From System Restore, you revert the system state to a restore point that was created before the update was installed.

Does this meet the goal?

A. Yes

B. No

Correct Answer: B

References: <https://support.microsoft.com/en-us/help/934307/description-of-the-windows-update-standalone-installer-in-windows>

---

## QUESTION 11

You have several computers that run Windows 10. The computers are in a workgroup and have BitLocker Drive Encryption (BitLocker) enabled.

You join the computers to Microsoft Azure Active Directory (Azure AD).

You need to ensure that you can recover the BitLocker recovery key for the computers from Azure AD.

What should you do first?

A. Disable BitLocker.

B. Add a BitLocker key protector.

C. Suspend BitLocker.

D. Disable the TPM chip.

Correct Answer: B

<https://docs.microsoft.com/en-us/windows/security/information-protection/bitlocker/prepare-your-organization-for-bitlocker-planning-and-policies#bitlocker-key-protectors>

---

## QUESTION 12

### HOTSPOT

You have a computer that runs Windows 10 and contains the folders shown in the following table.

Name	Path
FolderA	C:\FolderA
FolderB	C:\FolderA\FolderB
FolderC	C:\FolderA\FolderB\FolderC

You create the groups shown in the following table.

Name	Members
Group1	User1, User2
Group2	User2, User3
Group3	User1, User3

On FolderA, you remove permission inheritance. To each folder, you assign the NTFS permissions shown in the following table.

Folder	Permission
FolderA	Modify to group1 Read to Group2
FolderB	Write to Group2
FolderC	Read to Group3

For each of the following statements, select Yes if the statement is true. Otherwise, select No.

NOTE: Each correct selection is worth one point.

Hot Area:

## Statements

- User1 can read and write all files in FolderC.
- User2 can delete all files in FolderB.
- User3 can delete all files in FolderC.

Yes

No

☐  
☐  
☐
☐  
☐  
☐

Correct Answer:

## Statements

- User1 can read and write all files in FolderC.
- User2 can delete all files in FolderB.
- User3 can delete all files in FolderC.

Yes

No

☒  
☐  
☐
☐  
☒  
☒

References: <https://docs.microsoft.com/en-us/windows/security/identity-protection/access-control/access-control>

### QUESTION 13

You have a computer that runs Windows 10. You need to configure a picture password. What should you do?

- A. From Control Panel, configure the User Accounts settings.
- B. From the Settings app, configure the Sign-in options.
- C. From the Local Group Policy Editor, configure the Account Policies settings.
- D. From Windows PowerShell, run the Set-LocalUser cmdlet and specify the InputObject parameter.

Correct Answer: B

### QUESTION 14

You have already prepared Client1 for remote management.

You need to forward all events from the Application event log on Client1 to DC1.

To complete this task, sign in to the required computer or computers.

Correct Answer: See explanation below.

Configuring the event source computer

1.

Run the following command from an elevated privilege command prompt on the Windows Server domain controller to configure Windows Remote Management: `winrm qc -q`

2.

Start group policy by running the following command: `%SYSTEMROOT%\System32\gpedit.msc`

3.

Under the Computer Configuration node, expand the Administrative Templates node, then expand the Windows Components node, then select the Event Forwarding node.

4.

Right-click the SubscriptionManager setting, and select Properties. Enable the SubscriptionManager setting, and click the Show button to add a server address to the setting. Add at least one setting that specifies the event collector computer. The SubscriptionManager Properties window contains an Explain tab that describes the syntax for the setting.

5.

After the SubscriptionManager setting has been added, run the following command to ensure the policy is applied: `gpupdate /force`

Configuring the event collector computer

1.

Run the following command from an elevated privilege command prompt on the Windows Server domain controller to configure Windows Remote Management: `winrm qc -q`

2.

Run the following command to configure the Event Collector service: `wecutil qc /q`

3.

Create a source initiated subscription. This can either be done programmatically, by using the Event Viewer, or by using Wecutil.exe. If you use Wecutil.exe, you must create an event subscription XML file and use the following command: `wecutil cs configurationFile.xml`

Reference: <https://docs.microsoft.com/en-us/windows/win32/wec/setting-up-a-source-initiated-subscription#forwarding-the-security-log>

---

## QUESTION 15

Note: This question is part of a series of questions that present the same scenario. Each question in the series contains a unique solution that might meet the stated goals. Some question sets might have more than one correct solution, while



others might not have a correct solution.

After you answer a question in this section, you will NOT be able to return to it. As a result, these questions will not appear in the review screen.

You manage devices that run Windows 10.

Ten sales users will travel to a location that has limited bandwidth that is expensive. The sales users will be at the location for three weeks.

You need to prevent all Windows updates from downloading for the duration of the trip. The solution must not prevent access to email and the Internet.

Solution: From Network and Internet in the Settings app, you set the network connections as metered connections.

Does this meet the goal?

A. Yes

B. No

Correct Answer: B

<https://www.makeuseof.com/tag/5-ways-temporarily-turn-off-windows-update-windows-10/>

[MD-100 Practice Test](#)

[MD-100 Exam Questions](#)

[MD-100 Braindumps](#)